

APEC CCTV

Search and Playback Tutorial for the HDR900 Series DVR

Note*: These directions are for the use of a USB Mouse Control

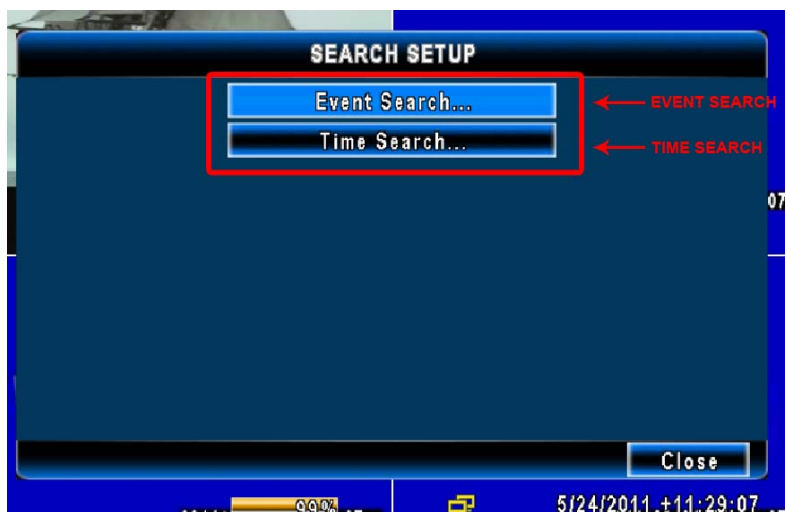
1. Right click to bring out the Main Navigation Bar (in GX models, move mouse pointer to the top of the screen).



2. Mouse over the first button in the menu, right below the menu, the text "Setup" should appear. Click on the first selection from the left on the drop down menu, text should change to "Search Setup"



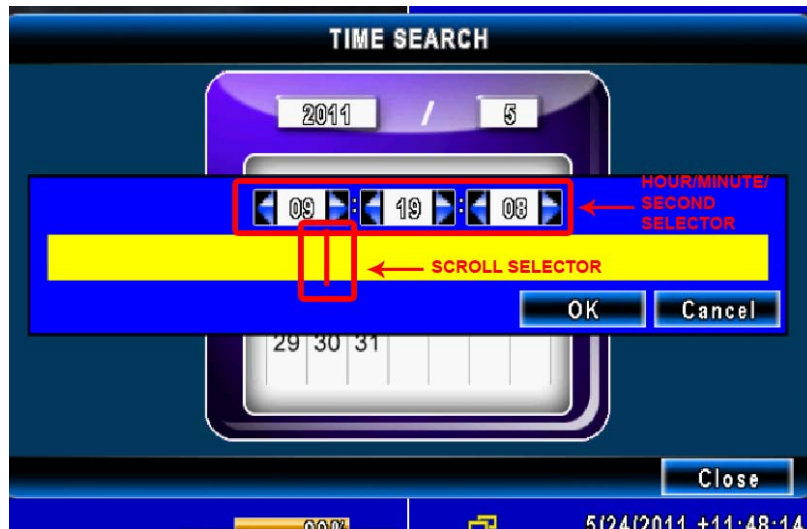
3. After clicking “Search Setup”, the search setup menu will appear. To select video footage by time, click “Time Search”. To select video footage using a list of events based on motion detection on/off records.



- 4.
- a)
- Clicking Time Search will bring up the “Calendar”. Select the desired Month/Day/Year.

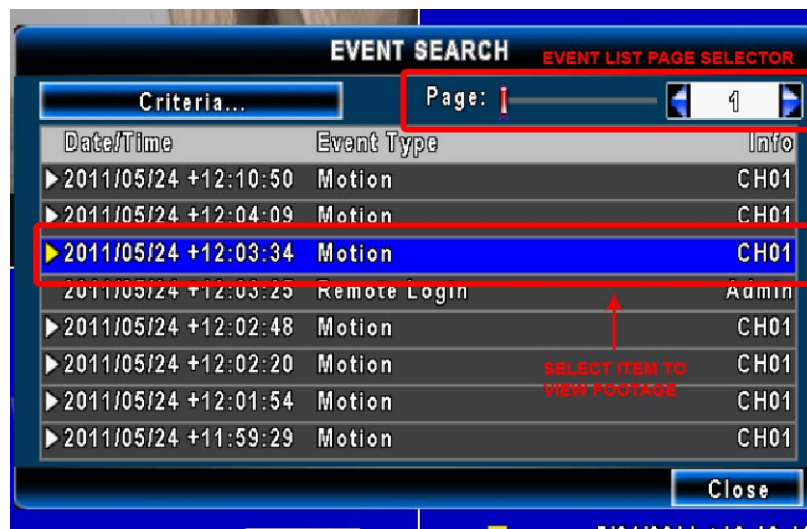


- Once a date has been selected, the time bar will appear. Navigate either by scrolling the time selector, or input a specific time using the HOUR/MINUTE/SECOND selector above. Then Click OK and your footage will play at the time you selected.



b)

- Clicking Event List will bring up a list of event records sorted in order of time and date. Click the Page Selector to flip through the pages of the list of events. Double Click the selected item on the list to start viewing the footage.



- 5) Once playback starts, there will be a control panel in the right corner. This controls play, fast forward, rewind, fast rewind, single channel view and multi-channel views. To exit playback mode, click the stop button.



Footage Backup Tutorial for the HDR900 Series DVR

Note*: These directions are for the use of a USB Mouse Control

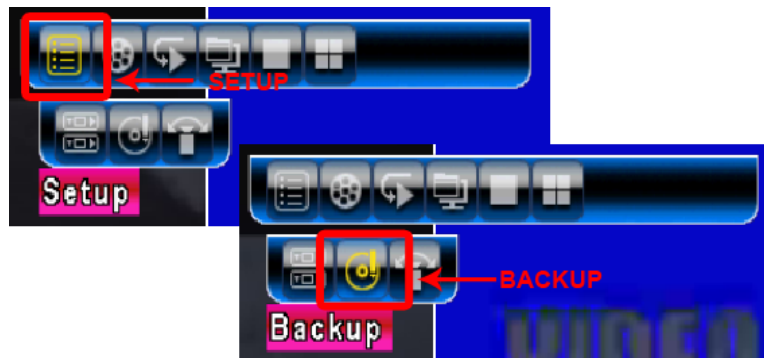
1. Before accessing the backup menu, plug in a USB flash drive into the USB port of the DVR System. To make sure the system detects the USB flash drive, wait for the USB symbol to appear before continuing.



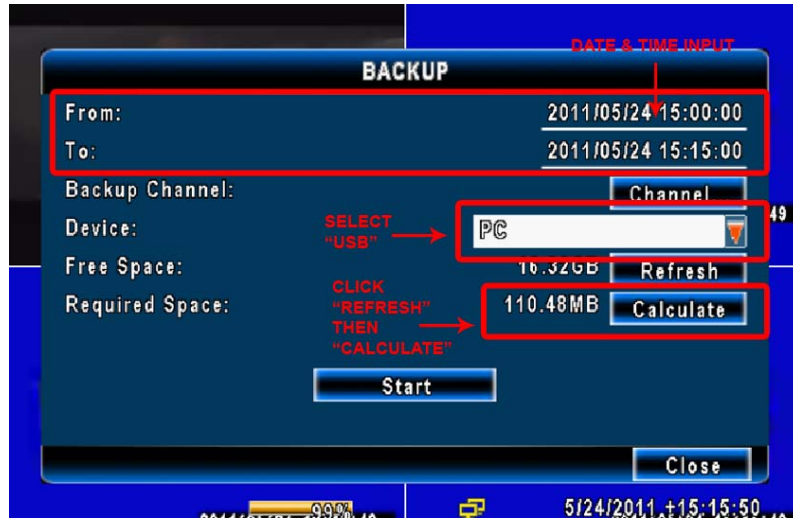
2. Right click to bring out the Main Navigation Bar (in GX models, move mouse pointer to the top of the screen).



3. Mouse over the first button in the menu, right below the menu, the text "Setup" should appear. Click on the second selection from the left on the drop down menu, text should change to "Backup"



4. Once "Backup" is selected, the "Backup" window will appear. First, set the DATE & TIME at the DATE & TIME input section. The date and time should be determined from the playback, from one certain time to another certain time. Then select a DEVICE, click the device pull-down menu and select "USB Drive". Click Refresh to determine how much free space is on the USB Drive, then Click Calculate to determine how large the required space is or how large your backup video file will be. Your Required Space should be less than your Free Space. Click Start to begin backup.



5. If the file is successfully being backed up, the progress bar will start. Once finished, a message will appear that says "Backup Success". Now the USB drive has your video footage and it is ready to be viewed on a PC. Remove USB drive from DVR system.

