

# PTIR56

## LONG RANGE IR PAN-TILT-ZOOM CAMERA

- Sony FCB-EX1010 Zoom Module
- High Resolution 1/4" Color CCD
- 530 TV Lines of Resolution
- Built-in ICR Mechanical IR Cut Filter
- Built-in Wide Dynamic Range (WDR)
- 36X Optical Zoom  
12X Digital Zoom
- 200 ft. IR Distance
- 1 Auto Cruise Track, 128 Presets
- Alarm I/O (only available in AC24V)
- Available in AC24V or DC12V
- UL Approved Standard
- Vandalproof Design
- RoHS Compliant



### Package Includes

Wall Mount, Shock Resistant Base, Power Supply, Data/Power Cable, I/O Cable (AC24V model)

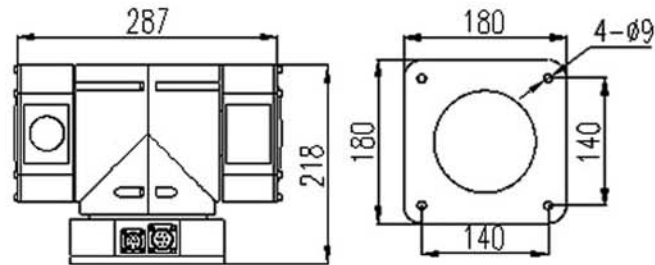
### PTZ RANGE & SPEED

Pan : 0~80°/sec, 360°

Tilt : 0~40°/sec, 180°



### SPECIFICATIONS



NUMBER OF PIXELS	NTSC: 795H x 596V
HORIZONTAL RESOLUTION	530 TV Lines
IMAGE SENSOR	1/4" High Resolution CCD
VIDEO OUTPUT	1 Vp-p, 75 ohm
LENS	36X: 3.4~122,4mm
ZOOM	36X, Optical, 12X Digital
S/N RATIO	>50dB
INFRARED RANGE	200 Ft.
MINIMUM ILLUMINATION	0 Lux with IR ON, 0.01 Lux ICR ON
IMAGE CONTROL	AWB, AGC, AE, BLC, ICR
PAN	Speed: 0~80°/sec   Range: 360° Continuously
TILT	Speed: 0~40°/sec   Range: 180°
COMMUNICATION	Multiprotocol, RS485
PRESET	128 presets total
AUTO CRUISE	1 Auto Cruise Track
POWER SOURCE	AC24V or DC12V
OPERATING TEMPERATURE	-35°C to +55°C
WEIGHT	20 Lbs/ 10 Kg
DIMENSIONS	287mm (W) x 218mm (H)

### SHOCK RESISTANT MOUNTING BASE

